

Stainless Steel Lift Table

MH-V Series



Operating Manual & Parts List

CAUTION! Operator and owner **MUST** read this manual carefully
and understand completely before using this lift table

Stainless Steel Lift Table MH-V Series

MH-V10, MH-V20, MH-V50, MH-V70

Operation and Service Manual

BEFORE OPERATING THE LIFT TABLE, READ THIS MANUAL CAREFULLY AND UNDERSTAND COMPLETELY. KEEP THIS MANUAL ON FILE FOR FUTURE REFERENCE. IF THIS IS LOST, PLEASE CONTACT YOUR LOCAL SUPPLIER FOR A NEW COPY. ALSO, IF THE WARNING/CAUTION DECAL ON THE UNIT IS LOST, PLEASE CONTACT YOUR LOCAL SUPPLIER FOR A NEW DECAL.

NOTE: On this manual, WARNING means the danger which can lead to death or serious injury. CAUTION means the danger which can lead to slight injury or property damage.

1. WARNING

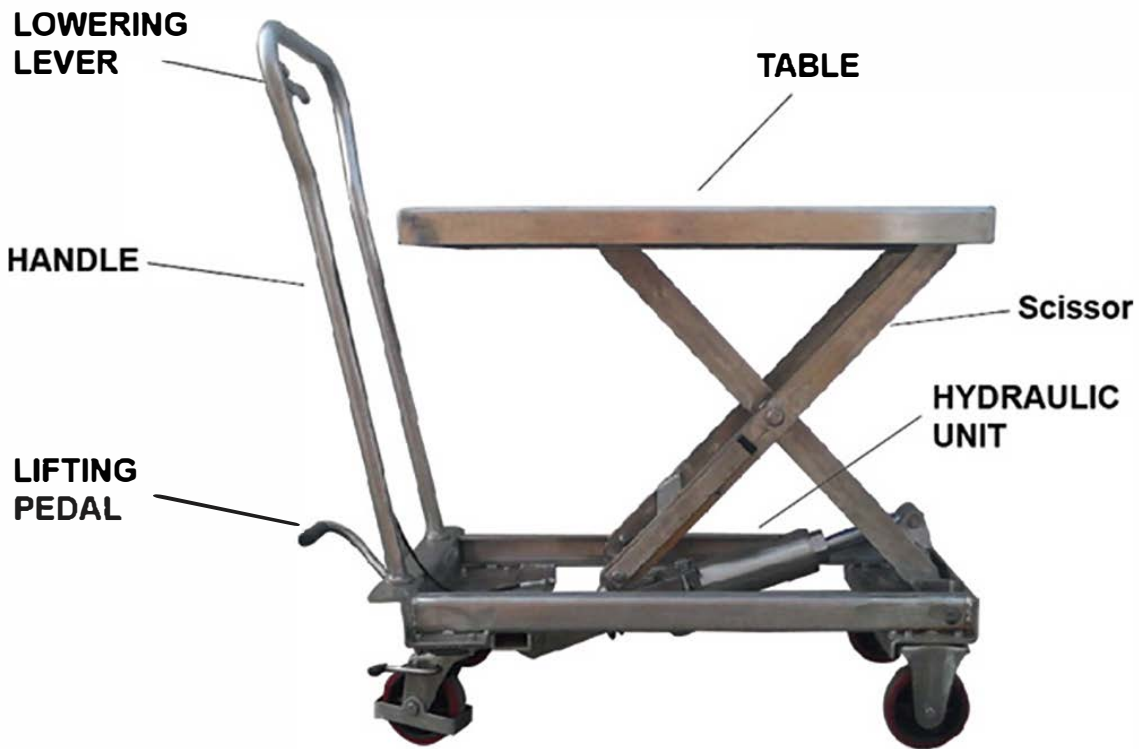
1. **DO NOT** put foot or hand in scissors mechanism.
2. **DO NOT** allow other person to stand in front of or behind lift table when it is moving.
3. **DO NOT** move lift table when table is in raised position. Load could fall down.
4. **DO NOT** enter under table.
5. **DO NOT** overload lift table.
6. **DO NOT** put foot in front of rolling wheels. Injury could result.
7. WATCH difference and hardness of floor level when moving lift table. Load could fall down.
8. **DO NOT** use lift table on slope or inclined surface, lift table may become uncontrollable and create danger.
9. **DO NOT** lift people. People could fall down and suffer severe injury.

2. CAUTION

1. Read this operation manual carefully and understand completely operating lift table. Improper operation could create danger.
2. This lift table is a movable lifter designed to lift or lower rated load on table. **NO NOT** use lift table for other purpose than its intended use.
3. **DO NOT** allow person to operate lift table who does not understand its operation.
4. **DO NOT** lower table too fast. Load could fall down and create danger.
5. KEEP watching the condition of load. Stop operating lift table if load becomes unstable.
6. Brake lift table when sliding load on or off table.
7. **DO NOT** side or end load. Load must be distributed on at least 80% of table area.
8. **DO NOT** use lift table with unstable, unbalanced loosely stacked load.
9. Practice maintenance work according to service instructions.
10. **DO NOT** modify lift table without manufacturers' written consent.
11. REMOVE load from table and use safety stopper to prevent table from lowering when servicing lift table.
12. This lift table is not designed to be water resistant. Use lift table under dry condition.

3. PARTS NAME

MH-V10 .MH-V20. MH-V50, MH-V70,



4. DAILY INSPECTION

Daily inspection is effective to find the malfunction or fault on lift table. Check lift table on the following points before operation.

CAUTION
DO NOT use lift table if any malfunction or fault is found.

- (1) Check for scratch, bending or cracking on the lift table.
- (2) Check if there is any oil leakage from the cylinder.
- (3) Check the vertical creep of the table.
- (4) Check the smooth movement of the wheel.
- (5) Check the function of brake.
- (6) Check if all the bolt and nuts are tightened firmly.

5. OPERATING LIFTTABLE

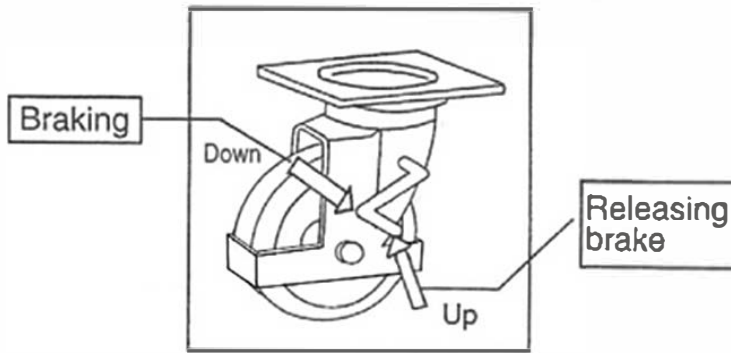
5-1. How to use the brake.

CAUTION
Brake lift table when not moving it in order to prevent sudden movement.

The brake is equipped with the swivel caster on the right side.

- (1) Braking the wheel, press the brake pedal.

(2) Releasing the brake, lift up the brake pedal.



5-2 Lifting the table

WARNING

1. **DO NOT** overload lift table, stay within its rated capacity.
2. **DO NOT** side end load must be distributed on at least 80% of table area.

Press the lifting pedal several times until the table reaches the desired position.

The table does not elevate after reaching the highest position even if the lifting pedal is pressed.

The table lowers slightly after reaching the highest position.

MAXIMUM CAPACITY OF TABLE

MH-V10	MH-V20	MH-V50	MH-V70
100KG	200KG	500KG	700KG

NOTE:

The hydraulic cylinder is designed to hold table.

5-3. Lowering table

WARNING

DO NOT put foot or hand in scissors mechanism.

Pull the lowering lever and table lowers.

5-4. Fold the handle For BSS10

To .Fold the handle push down the lock bar and lay down the handle

6. Specifications

Model	Capacity (kg)	Table (mm)	Table Height(mm)	Stroke	L×W×H (mm)	Pedal to Max. height.	Wheel (mm) ϕ	Weight (kg)
MH-V10	100	700×450	225-760	535	1000×450×950	16	100	40
MH-V20	200	830×500	335-915	580	1100×500×1010	25	125	76
MH-V50	500	1010×520	432-1000	568	1130×520×1260	55	150	123
MH-V70	700	1010×520	432-1000	568	1130×520×1260	55	150	123

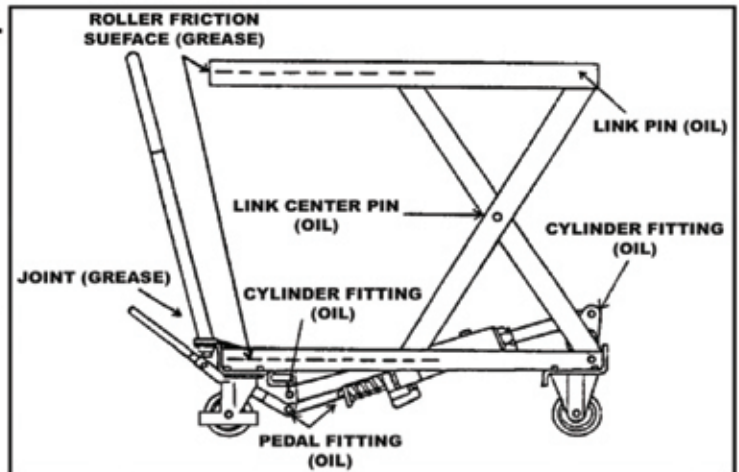
7. Service instruction

7.1-1. Lubricate each point described below every month:

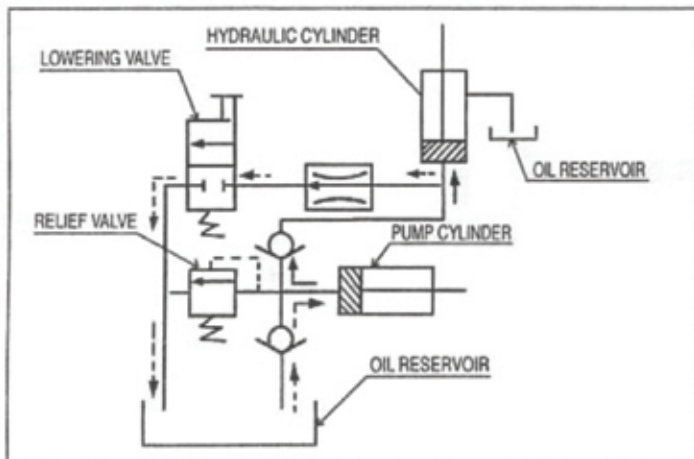
7.2. Change hydraulic oil every 12 months.

Lubricating Points

- (1) Fitting of cylinder.....Oil
- (2) Roller friction surface.....Grease
- (3) Link PinOil
- (4) Pedal fitting point.....Oil
- (5) Link center pin.....Oil
- (6) Joint.....Grease
- (7) Grease nipple.....Grease
- (8) Hydraulic circuit



8. Hydraulic Circuit



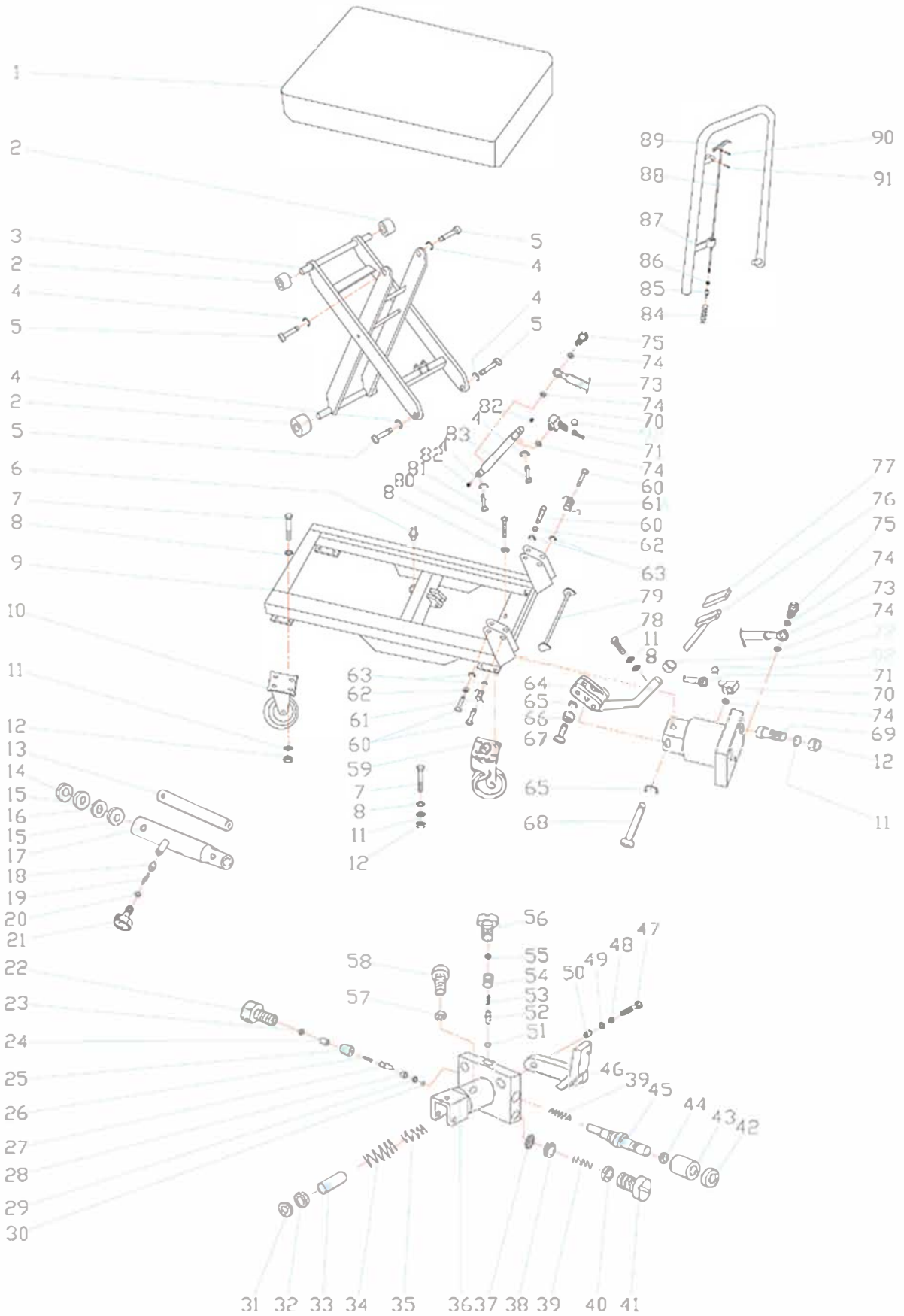
LIFTING →

LOWERING →

SUCTION →

9. Exploded Figure & Parts List

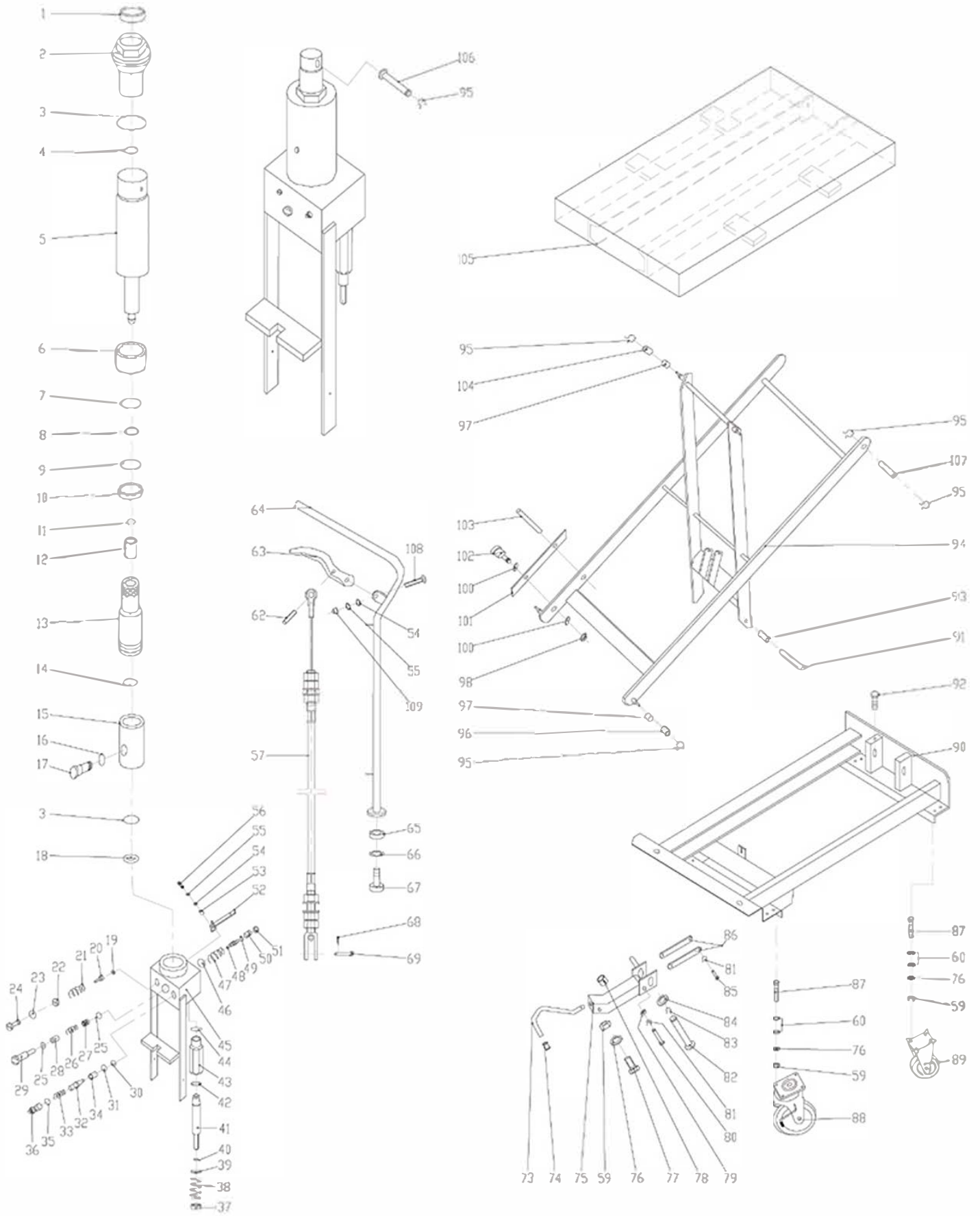
MH-V10 Exploded Figure



MH-V10 LIFT TABLE PARTS LIST

No.	DESCRIPTION	Q'ty	No.	DESCRIPTION	Q'ty
1.	Table pair	1	52.	Steel ball holder	1
2.	Guide roller	4	53.	Relief spring	1
3.	Scissors	1	54.	Regulating pressure plug	1
4.	Snap ring	6	55.	O ring	1
5.	Link pin	4	56.	Relief plug	1
6.	Safety pin	1	57.	O ring	1
7.	Hex bolt	16	58.	Plug	1
8.	Washer	18	59.	Rear wheel	2
9.	Frame pair	1	60.	Handle pin	4
10.	Front wheel	2	61.	Handle lock spring L	1
11.	Spring washer	19	61A	Handle lock spring R	1
12.	Hex. nut	18	62.	Bushing	2
13.	Piston rod	1	63.	Snap ring	4
14.	Dust seal	1	64.	Pedal holder	1
15.	O ring	2	65.	Snap ring	2
16.	Back up ring	1	66.	Pressure roller	1
17.	Cylinder pair	1	67.	Pressure roller pin	1
18.	Spring seat	1	68.	Pedal Pivot Pin	1
19.	Spring	1	69.	Hex. bolt	2
20.	Seal ring	1	70.	Elbow	2
21.	Joint	1	71.	Oil return hose	1
22.	Flow control joint	1	72.	Rubber bushing	1
23.	O ring	1	73.	High pressure hose	1
24.	Adjust casing	1	74.	Seal ring	6
25.	Spring seat	1	75.	Adaptor	2
26.	Valve spring	1	76.	Pedal Pair	1
27.	Conical valve	1	77.	Pedal rubber	2
28.	Valve seat	1	78.	Hex bolt	1
29.	O ring	1	79.	Lock bar	1
30.	Steel ball $\phi 7$	1	80.	Hex. bolt	1
31.	Dust seal	1	81.	Cylinder pivot pin	1
32.	Y ring	1	82.	Grease fitting	2
33.	Plunger	1	83.	Piston head pin	1
34.	Pump spring B	1	84.	Roller chain	1
35.	Pump spring A	1	85.	Valve rod II	1
36.	Pump bass	1	86.	Nut M6	1
37.	Net	1	87.	Handle pair	1
38.	Washer	1	88.	Valve rod I	1
39.	Back valve spring	1	89.	Control link	1
40.	O-ring	1	90.	Roll pin	1
41.	Plug	1	91.	Roll pin	1
42.	O ring	1	92.	Check ring	2
43.	Steering bush	1			
44.	O ring	1		Cylinder Assembly	13-21
45.	Discharge lever	1		Pump Unit Assembly	64-78
46.	Valve arm	1		Pump Unit Sub Assembly	22-58
47.	Socket head screw	1		Handle Assembly	84-91
48.	Spring washer	1		Pedal Assembly	76-77
49.	Washer	1			
50.	Bushing	1		Seal kit Assembly	
51.	Steel ball	1		14,15,20,23,29,31,32,40,42,44,55,57,74	

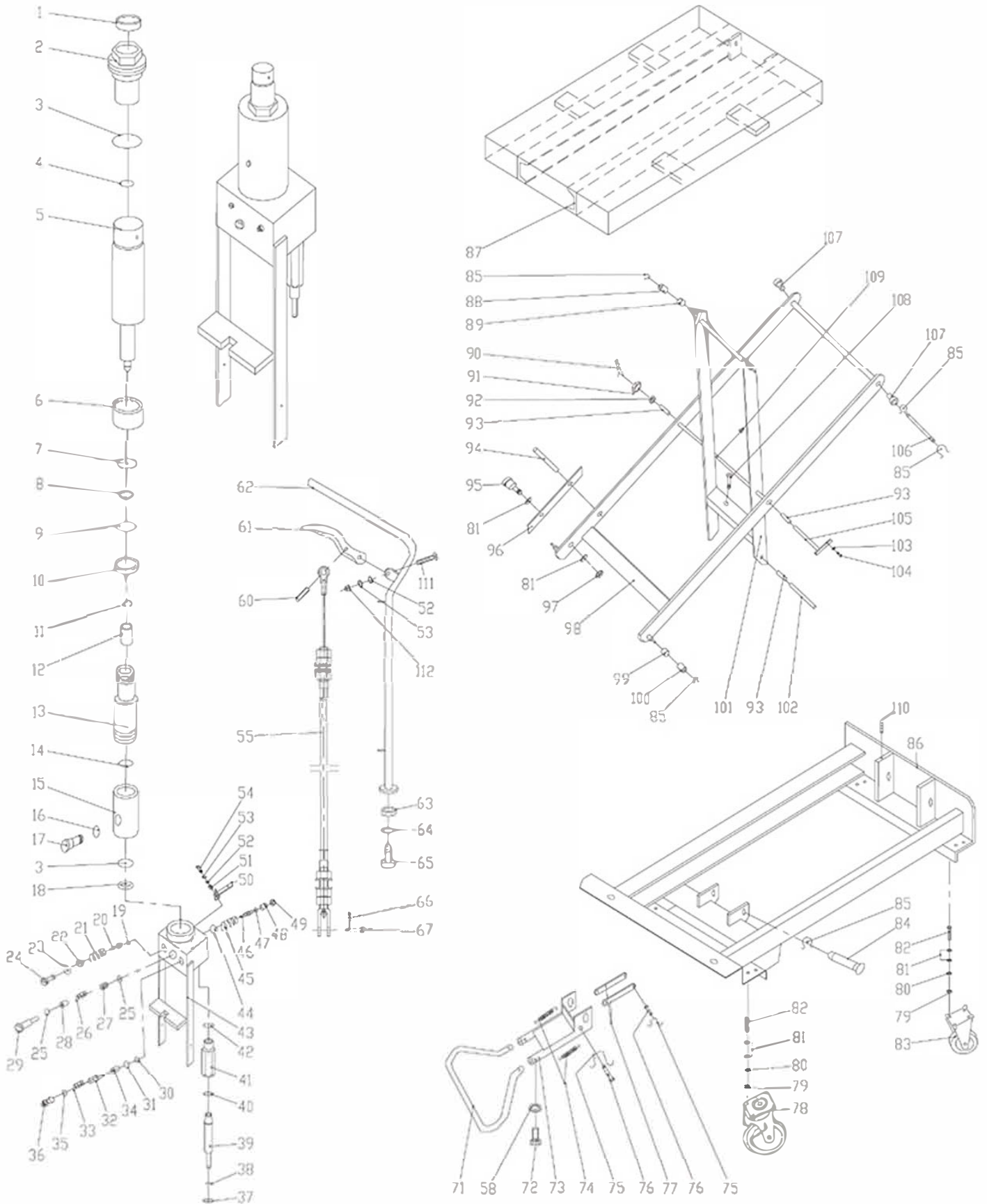
MH-V20 Exploded Figure



MH-V20 LIFT TABLE PARTS LIST

No.	DESCRIPTION	Q'ty	No.	DESCRIPTION	Q'ty
1.	Seal cover d30×D42×7	1	56.	Hex soch screw M6×16	1
2.	Cylinder cover	1	57.	Put oressure assembly line	1
3.	O-ring d63×2.65	2	59.	Nut M8	17
4.	O-ring d30×3.55	1	60.	Washer 8	30
5.	Piston rod	1	62.	Soring pin	1
6.	Soacing casing	1	63.	Control link	1
7.	Guide ringδ1.5×15	1	64.	Handle	1
8.	O-ring D20×2.4	1	65.	Soacing casing	2
9.	Seal ring d34×D40×4.5	1	66.	Soring washer 12	2
10.	Piston rod retainer	1	67.	Hexagon head stud M12×30	2
11.	Retaining ring 18	1	68.	Solit pin	1
12.	Piston	1	69.	Pin	1
13.	Cylinder	1	73.	Pedal bent pipe	1
14.	Cylinder washer	1	74.	Pedal rubber	1
15.	Reservior	1	75.	Shake link	1
16.	O-ring d10×2.65	1	76.	Soring washer 8	17
17.	Filler screw	1	77.	Hex soch screw	1
18.	Washer for reservior	1	78.	Buffer mat	1
19.	Steel ball 5	1	79.	Partition set	1
20.	Spring base	1	80.	Pin axle	1
21.	Regulating pressure soring	1	81.	Retainer 10	2
22.	Regulating pressure screw	1	82.	Pin axle	1
23.	O-ring d7.1×1.8	1	83.	Retainer 20	1
24.	End cover	1	84.	Washer	1
25.	O-ring d15×2.65	2	85.	Pin axle	1
26.	Regulating speed spring	1	86.	Link	2
27.	Regulating soeed slide valve	1	87.	Hex soch screw M8×25	16
28.	Regulating soeed spring casing	1	88.	Wheel	2
29.	Regulating speed valve casing	1	89.	Wheel	2
30.	Steel ball 7	1	90.	Chassis	1
31.	O-ring d6.9×1.8	1	91.	Pin axle	1
32.	Conical valve	1	92.	Bolt M6×8	1
33.	Check valve spring	1	93.	Bushing	2
34.	Check valve casing	1	94.	Scissors lever	1
35.	O-ring d10×1.8	1	95.	Retainer 16	9
36.	Check valve screw	1	96.	Roller for chassis	2
37.	Soring base	1	97.	Bushing	2
38.	Soring	1	98.	Nut M10	2
39.	Seal cover d18×D25×4.5	1	100.	Washer 10	4
40.	O-ring d18×2.65	1	101.	Safety rod	2
41.	Pump olunger	1	102.	Screw bolt M10×40	2
42.	Y-ring	1	103.	Soring pin 8×30	2
43.	Pump body for plunger	1	104.	Roller for table	2
44.	O-ring d28×3.1	1	105.	Table	1
45.	Pump body	1	106.	Pin axle	1
46.	O-ring d10.6×2.65	1	107.	Pin axle	2
47.	Soring	1	108.	Screw M6×30	1
48.	Reflux rod	1	109.	Cover-tvpe nut M6	1
49.	O-ring d4×1.8	1			
50.	Guide casing	1		Pump ass'y 1~51	
51.	Protect casing	1		Swivel wheel ass'y 88	
52.	Lever	1		Front wheel ass'y 89	
53.	Lever bushing	1			
54.	Washer 6	2		Seal kit ass'y 1,3,4,7,8,9,16,23,25,31,35,39,40,42,44,46,49	
55.	Spring washer 6	1		Handle ass'y 54,55,57,62~69,108,109	

MH-V50& MH-V70 Exploded Figure



MH-V50 MH-V70 LIFT TABLE PARTS LIST

No.	DESCRIPTION	QTY	No.	DESCRIPTION	QTY
1.	Seal cover d30×D42×7	1	60.	Spring pin	1
2.	Cylinder cover	1	61.	Control link	1
3.	O-ring d63×2.65	2	62.	Handle	1
4.	O-ring d30×3.55	1	63.	Spacing casing	2
5.	Piston Rod	1	64.	Spring washer 12	2
6.	Spacing casing	1	65.	Hex screw M12×30	2
7.	Guiding δ1.5×15	1	66.	Split pin 2×15	1
8.	O-ring D20×2.4	1	67.	Pin	1
9.	Seal ring d34×D40×4.5	1	71.	Pedal bent pipe	1
10.	Retainer for piston rod	1	72.	Hex sock screw M8×20	2
11.	Spacing retainer 18	1	73.	Shake link	1
12.	Piston	1	74.	Spring	2
13.	Cylinder	1	75.	Retainer 10	2
14.	Washer for cylinder	1	76.	Pin axle	2
15.	Reservoir	1	77.	Link	2
16.	O-ring d10×2.65	1	78.	Wheel	2
17.	Filler screw	1	79.	Nut M10	16
18.	Washer for reservoir	1	80.	Spring washer 10	16
19.	Steel ball 5	1	81.	Washer 10	36
20.	Spring base	1	82.	Hex sock screw M10×25	16
21.	Regulating pressure spring	1	83.	Wheel	2
22.	Regulating pressure screw	1	84.	axle	1
23.	O-ring d7.1×1.8	1	85.	Retainer 20	7
24.	End cover	1	86.	Chassis	1
25.	O-ring d15×2.65	2	87.	Table	1
26.	Regulating speed spring	1	88.	Roller for table	2
27.	Regulating slide-valve	1	89.	Bushing	2
28.	Regulating speed spring casing	1	90.	Split pin 3.2×26	1
29.	Regulating speed slide-casing	1	91.	Nut M16	1
30.	Steel ball 7	1	92.	Washing	1
31.	O-ring d6.9×1.8	1	93.	Bushing	4
32.	Conical valve	1	94.	Spring pin 8×30	2
33.	Spring	1	95.	Screw bolt M10×40	2
34.	Check valve casing	1	96.	Safety rod	2
35.	O-ring d10×1.8	1	97.	Nut M10	2
36.	Check valve screw	1	98.	External scissors lever	1
37.	Seal cover d18×D25×4.5	1	99.	Bushing	2
38.	O-ring d18×2.65	1	100.	Roller for chassis	2
39.	Pump plunger	1	101.	Internal scissors lever	1
40.	Y-ring	1	102.	Pin axle for chassis	1
41.	Pump body for plunger	1	103.	Spring washer 8	1
42.	O-ring D28×3.1	1	104.	Hex screw M8×16	1
43.	Pump body	1	105.	Pin axle for scissors	1
44.	O-ring d10.6×2.65	1	106.	Pin axle for table	1
45.	Spring	1	107.	Bushing	2
46.	Reflux rod	1	108.	Bolt M8×12	1
47.	O-ring d4×1.8	1	109.	Oil cup	2
48.	Guide casing	1	110.	Bolt M6×8	1
49.	Protect casing	1	111.	Screw M6×30	1
50.	Lever	1	112.	Cover-type nut M6	1
51.	Lever bushing	1			
52.	Washer 6	2		Pump ass'y 1~49	
53.	Spring washer 6	2		Swivel wheel ass'y 78	
54.	Hex sock screw M6×16	1		Front wheel ass'y 83,25,31,35,37,38,40,42,44,47	
55.	Put pressure assembly line	1		Seal kit ass'y 1,3,4,7,8,9,16,23,	
58.	Washer 8	2		Handle ass'y 52,55~62,66~70	